

Crab... *Made Simple*

Provided by: **Harbor
Seafood™**
Since 1975



KING CRAB PORTIONS

WHOLE LEG & CLAW



SELECTS



MERUS



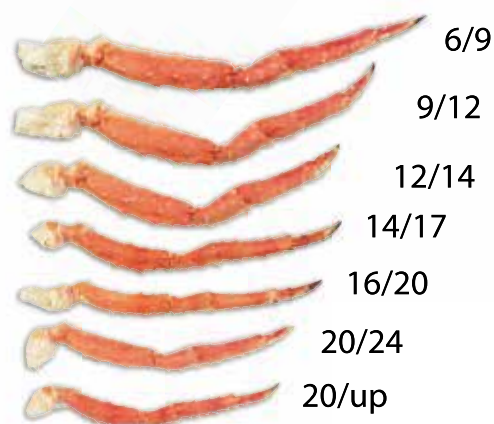
CLAW & ARM



BROILER CLAW

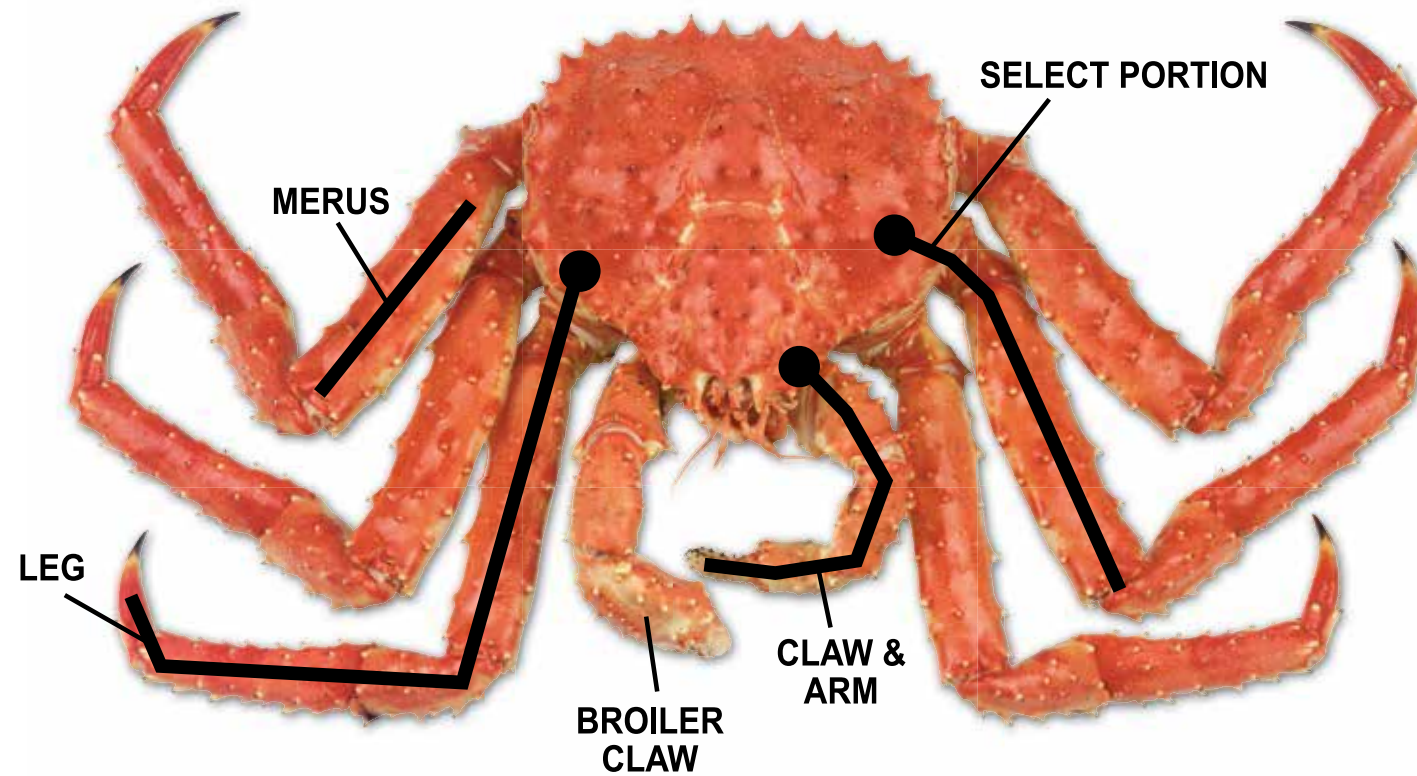


KING CRAB SIZES



Whole King Crab

Breaking it down

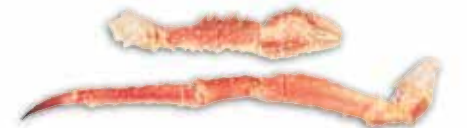


KING CRAB CUSTOM CUTS

SPLIT LEG & CLAW



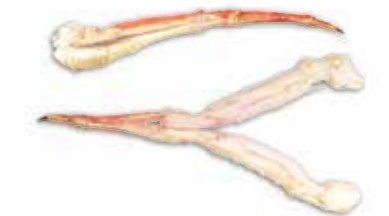
SCORE / SNAP & EAT



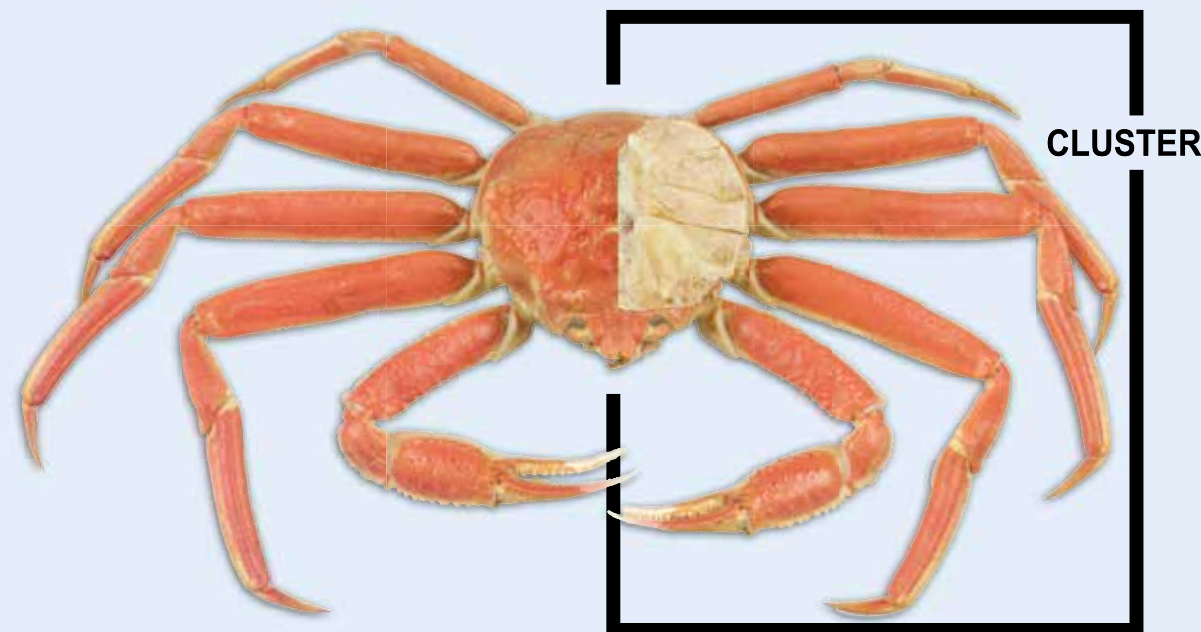
WHOLE LEG WINDOW CUT



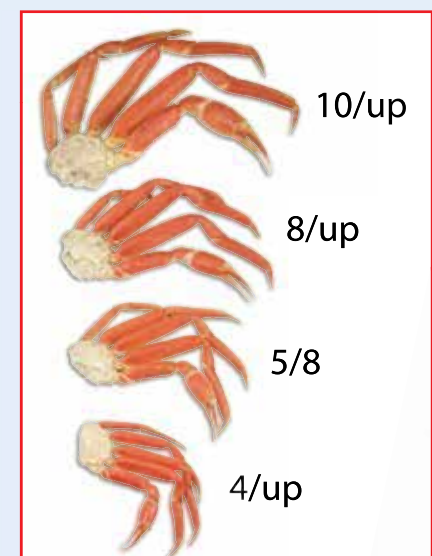
WHOLE LEG BUTTERFLY



Whole Snow Crab



CLUSTER SIZES



CUSTOM CUTS



SINGLE CUTS



SPLIT CLUSTERS

Harbor Seafood™

Since 1975

Who you buy from does matter...

At Harbor Seafood, we provide outstanding service and valuable market information while supplying quality seafood from around the world.

Our business fundamentals are based upon reliability and integrity. We take pride in maintaining long term prosperous relationships with our valued customers and suppliers.

Founded in 1975, Harbor Seafood leads the field in experience, expertise, and attention to detail, and offers unparalleled service in frozen, bulk, pre-packaged, and private label products. Under a comprehensive and highly recognized variety of brand names, Harbor Seafood guarantees the quality and consistency you demand.

Available in:



2 Lb, 5 Lb, 10 Lb, 20 Lb King Crab Box



2 Lb & 10 Lb Snow Crab Box

For more details, email or call us at:

info@harborseafood.com

1-800-645-2211